

New Zealand Diving and Salvage Limited

# Vessel Specifications

## MV ISLAND LEADER II

Multi Role Vessel



### GENERAL

Survey	Maritime New Zealand New Zealand Offshore MNZ 134035
Home Port	Wellington, New Zealand
Design	Kailis
Hull Construction	Aluminium
Gross Tonnage	78
MMSI #	512004828
Radio Call Sign	ZMW3111

### DIMENSIONS

Length Overall	23.99 metres
Draft	1.8 metres
Beam	6.9 metres

### MANOEUVRING AND PROPULSION SYSTEM

Main Engines	CAT C18 755hp
G/Box	Twin Disc MGX 5145 SC 2.5:1
Propulsion	Shaft Drive
Bow & Stern Thruster	Key power hydraulic
Generators	CAT C4.4 38 EKW Perkins 3 cyl 40 KVA

### TANK CAPACITY

Fuel	42,000 litres
Water	14,500 litres

### LIFE SAVING

Life Raft	10 man
-----------	--------

### DIVE CONTROL

Dive control and surveyors deck  
HP and LP compressors

### OTHER

Stabiliser  
Fuel supply pump

### DECK AND LIFTING EQUIPMENT

Capstan Winch	3 tonne
Tilt LARS (Removable)	6 tonne
Deck Winch	4.5 tonne
Deck Crane	Hiab 1 tonne at 11 metres
A Frame	10 tonne

### RADIO AND NAVIGATIONAL EQUIPMENT

Auto Pilot	Tokyo Keiki
GPS	Furuno GP-32
Radar	Furuno NavNet
Plotter	Furuno NavNet
Sounder	Furuno NavNet
	Furuno FCV-551
Radios	Icom IC-M710 AUS 2 x VHF
Lighting	24v – 240v

### PERFORMANCE

Maximum Speed	11.5 knots
Cruise Speed	10 knots
Economical Speed	9 knots
Bollard Pull	5 tonne at 80% engine load
Fuel Consumption	110 litres/hour at 10 knots

### ACCOMMODATION

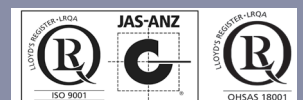
Single Berths	10
Shower	Yes
Toilet	Yes
Galley	4 burner electric stove Microwave Fridge / Freezer
Laundry	Washing machine / dryer

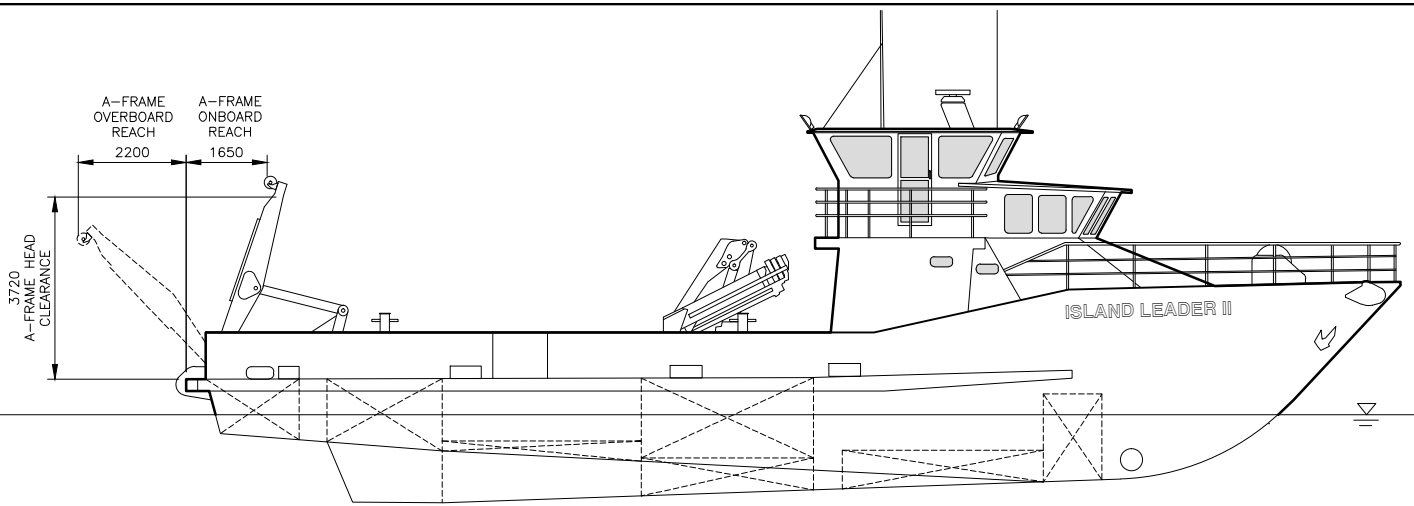
### ANCHORING EQUIPMENT

4 point mooring

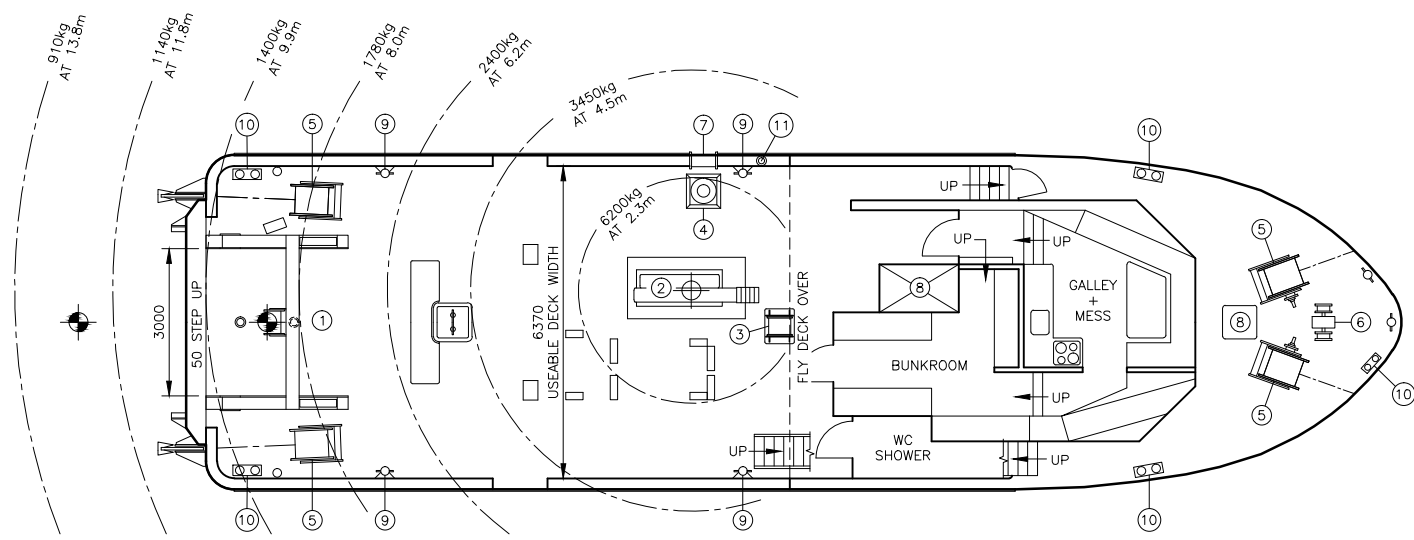
134 GRACEFIELD ROAD, SEAVIEW, LOWER HUTT  
PO BOX 30 392, LOWER HUTT, 5040, NEW ZEALAND  
P: +64 (0)4 568 2505 | E: nzds@nzds.co.nz | W: www.nzds.co.nz

Specifications are subject to change. Last updated August 2015

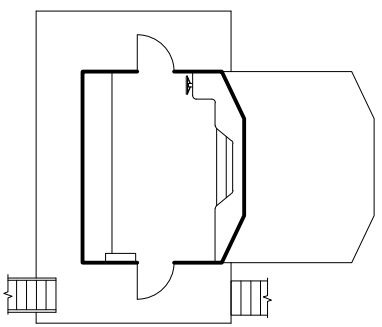




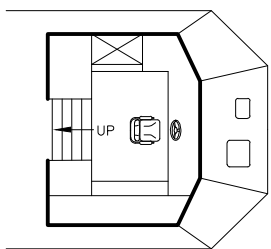
**ELEVATION**



**MAIN DECK PLAN**



**FLY BRIDGE PLAN**  
 (SHOWN OFFSET FROM TRUE PLAN POSITION)



**BRIDGE PLAN**  
 (SHOWN OFFSET FROM TRUE PLAN POSITION)



SCALE 1:150

**PRINCIPAL PARTICULARS**

OVERALL LENGTH:	23.99 m
BEAM:	6.9 m
DRAFT:	1.8 m
BERTHS:	10
LIFERAFT:	10 MAN
CRUISE SPEED:	9 KNOTS
MAIN ENGINE:	755 HP
BOLLARD PULL:	5.0 TONNE AT 80% ENGINE LOAD

**MAIN DECK EQUIPMENT**

ITEM	DESCRIPTION	SWL CAPACITY
1	LIFTING A-FRAME	10 TONNE
2	HIAB 175-4	6.2 TONNE AT 2.3m
3	DECK WINCH	5 TONNE
4	CAPSTAN WINCH	5 TONNE
5	ANCHOR WINCH	
6	CHAIN GYPSY	
7	ROLLER	
8	RAISED HATCH	
9	SAMSON POST BOLLARD	
10	HORN BOLLARD	
11	CAPSTAN	

**MV ISLAND LEADER II  
 GENERAL ARRANGEMENT  
 ALL DECKS**

Scale (A4): 1:150 | Drawn: RVE | Date: 08/14 | CAD File: DR-140704-001R4 | Rev: 4

